

Using the Update Manager

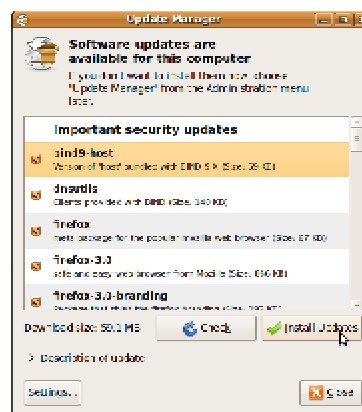
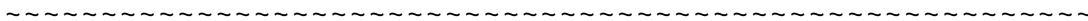


The Update Manager will run automatically when you start the computer. It's important for security - checking your system to see if there are any updates that you need.

These updates also help Ubuntu to run efficiently.

Before you add any new programs it's a good idea to check that you are up to date. Start the update manager from the "System" menu.

Click on Administration and from the sub menu that expands select "Update Manager"



For most of this video we've just shown the window that appears on the desktop to make it easier to read.

After checking your system you see a window like this, listing the updates needed.

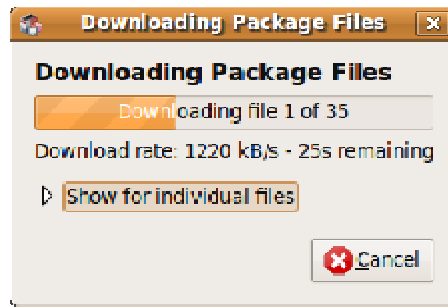
Just click the button "Install Updates".

You can just sit back and watch the next stages but we thought you might like to see what to expect.

If your system is up to date the window will be blank - there's an example later in the video.

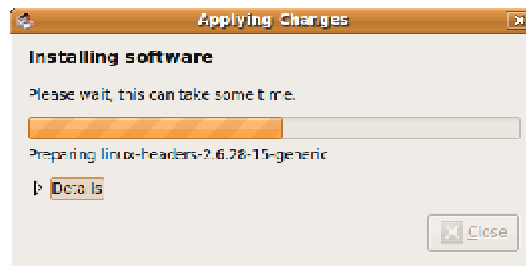
In this case the "Install Updates" button will be "greyed, or faded out" so just click the "Close" button.





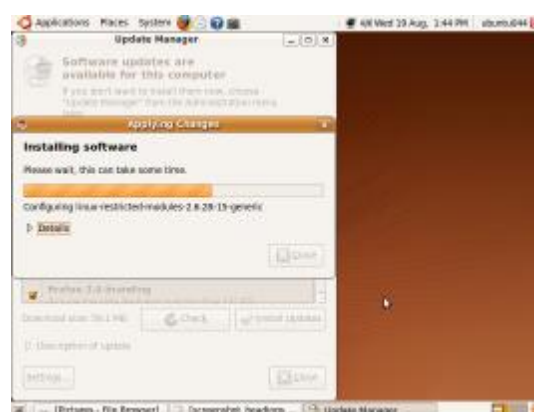
After you click the "Install Updates" button this new window appears. In this case you can see it's downloading 35 files, or updates. Just sit back and wait.

35 files is quite normal and don't be surprised by larger numbers. Many of them are very small and don't take long.



Next the files need to be installed, so after they've finished downloading this new window opens.

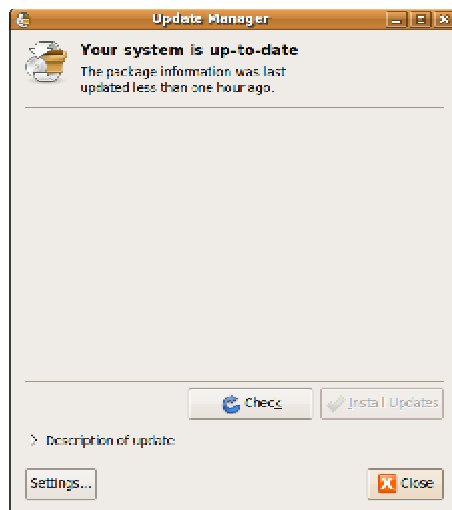
There's nothing for you to do, it just lets you know what's going on as it can take a minute or two.



This is what the same window looks like on the desktop.

You can see it's on top of others.

The current, or active, window is always the one with the darker brown bar across the top. Here it's titled "Applying Changes"

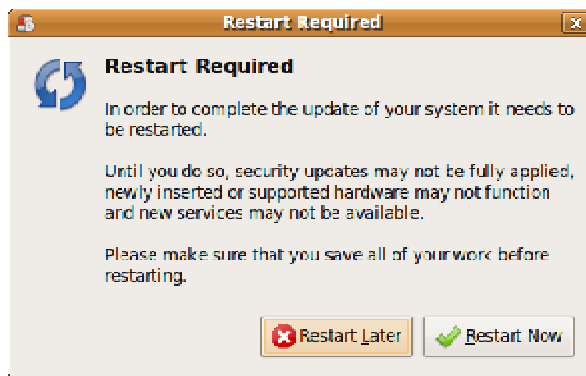


When the files have been installed you'll see this window showing you that "Your system is up-to-date".

This is the first time you have to do anything – just click the "Close" button.

Remember you might see this window right at the start if your system is already up to date.

It means there's nothing better on The Internet so just click the "Close" button.



Occasionally you may have to restart the computer to activate or "apply" the changes. We suggest for now that if this screen appears you always pick "Restart Now". Leave the "Restart Later" option until you have more experience.

If you see something you're not sure about try using your mobile to take a picture or video. You can bring it to the training sessions with KW online.

That's the end of this quick introduction on using the update manager. Thanks for watching Gerry, Mark & George