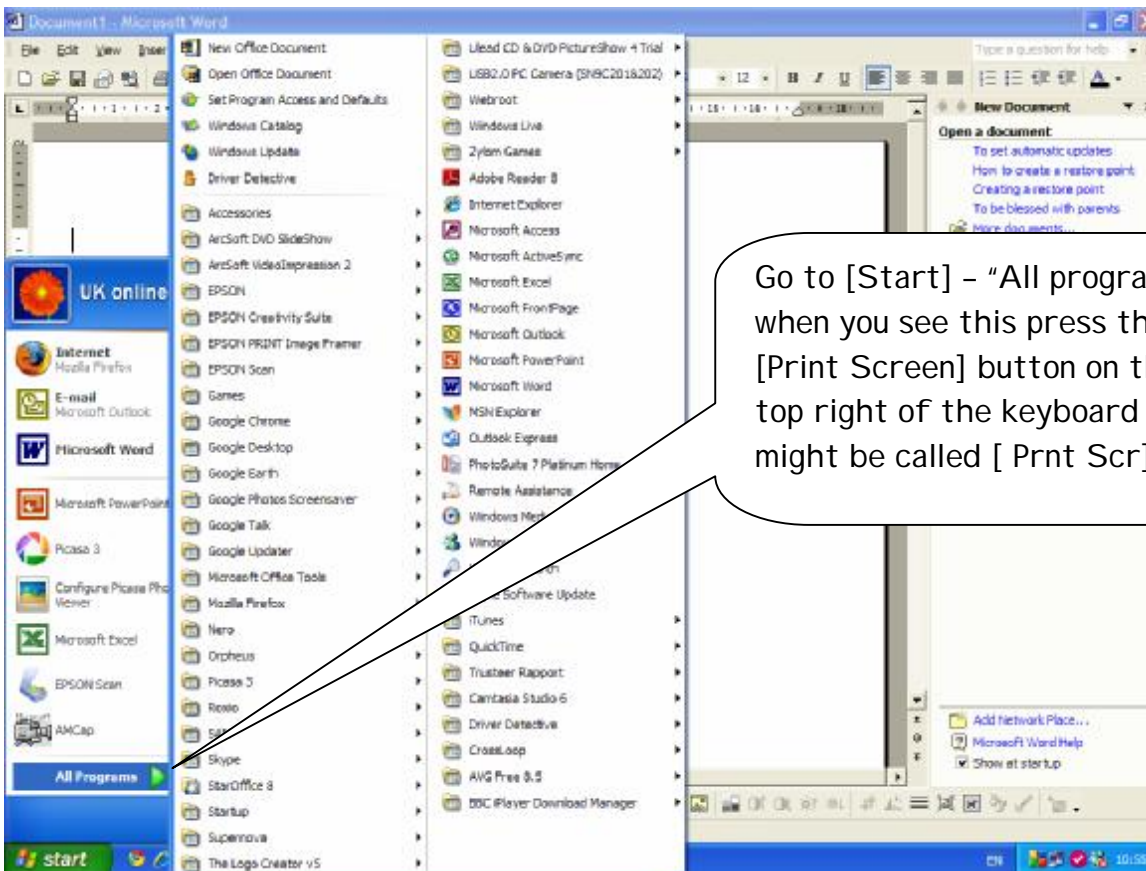


Open Word - either

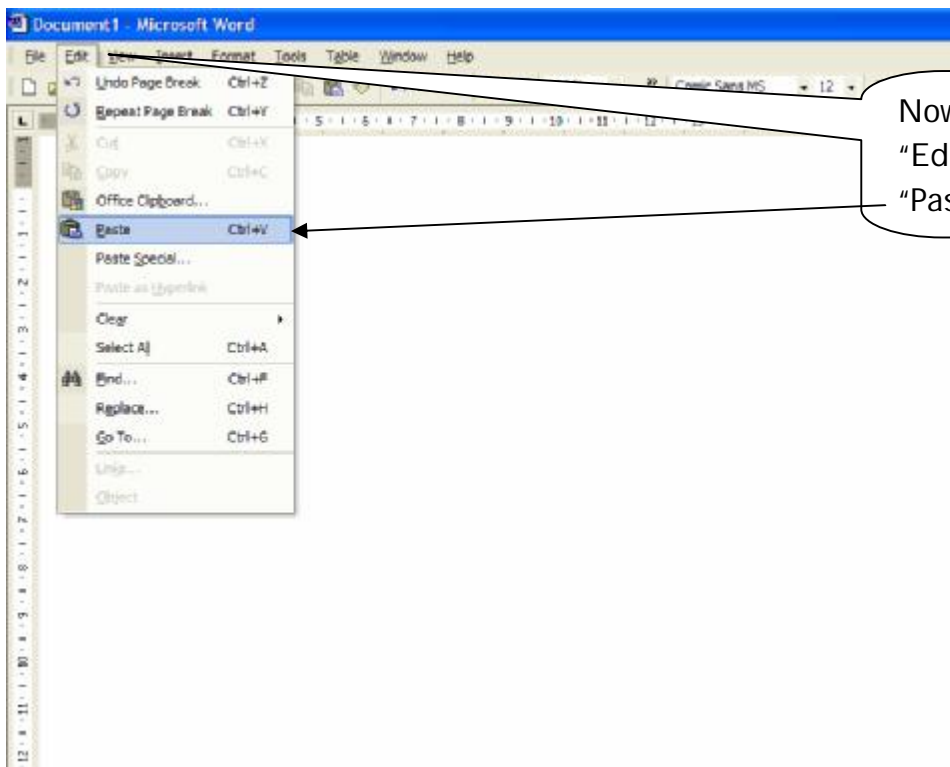
[Start] -  
Microsoft  
Word OR



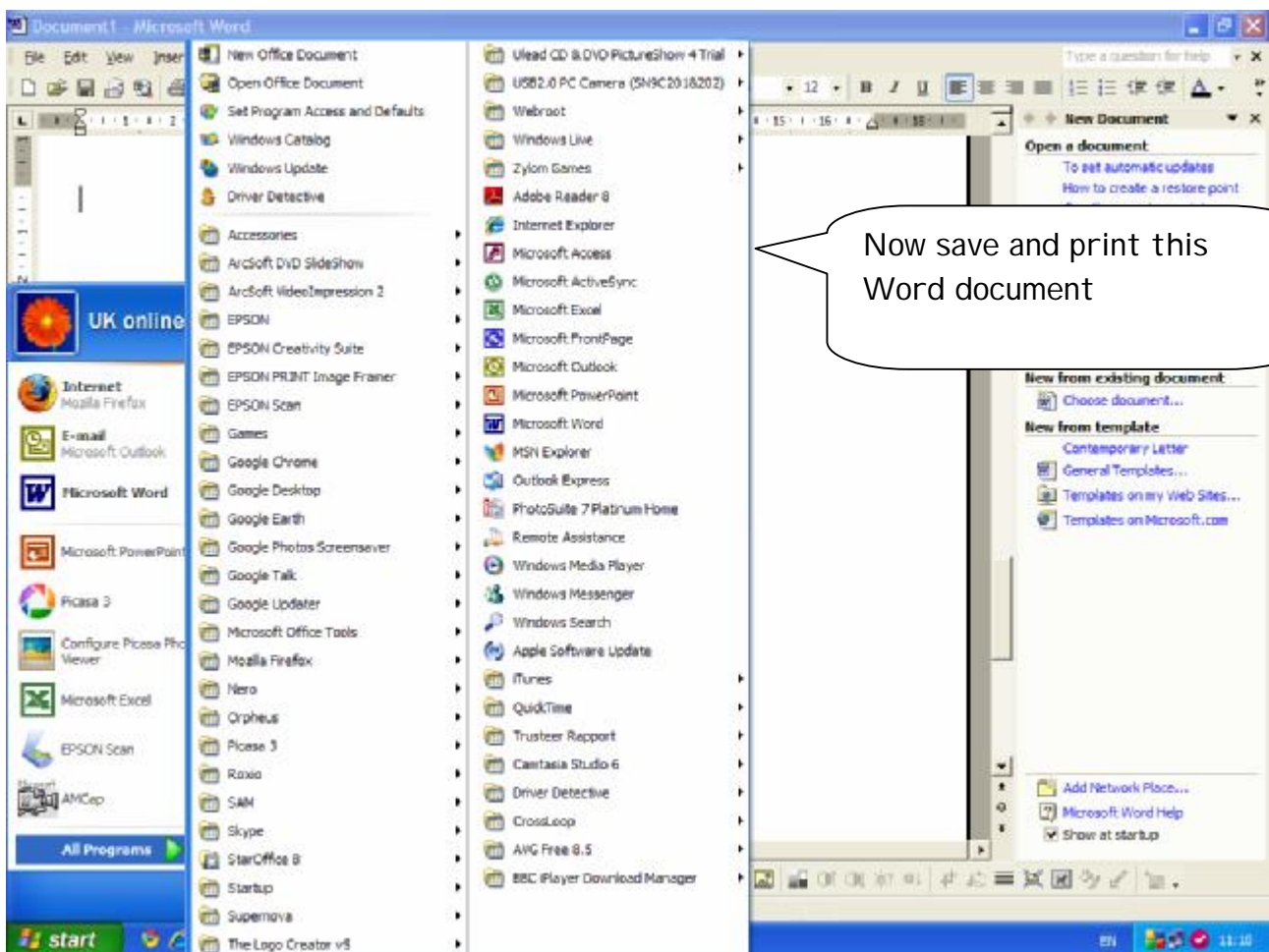
IF you can't see it go to  
[Start] - "All Programs" -  
find Microsoft Word



Go to [Start] - "All programs" -  
when you see this press the  
[Print Screen] button on the  
top right of the keyboard - it  
might be called [ Prnt Scr]



Now go to Word find the "Edit" menu and select "Paste"



Now save and print this Word document